

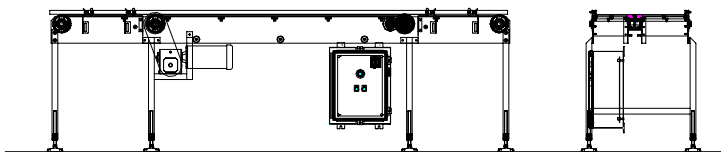
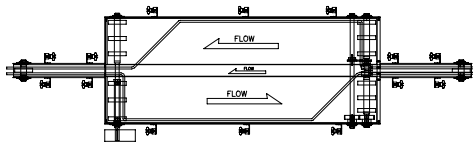


Bi-directional Accumulation Conveyor System



Specifications

Belting:	Intralox 1100 Series or Rexnord 1500 or 5900 Series
Belt Widths:	As necessary
Frame:	12 ga. 304 stainless steel, No. 4 finish
Frame Width:	Belt width plus 3/4"
Belt Speed:	To be determined
Bearings:	1 inch, 2 hole precision
Drive Motor:	See Options
Drive Shaft:	1" dia. 303 stainless steel
Guide Rail:	Tool-free adjustable, VG-SSR, 1 rail per side. Adjustable to belt width plus 2" to minus 6"
Supports:	1 1/2" square stainless steel tubing
Elevation:	34" to 38" to top of belt
Electrical Controls:	See Options



Bi-directional accumulation conveyors are used wherever inline accumulation is required. For example-

- Pack-on. An entire tray of product is pushed onto the Bi-Di conveyor and it automatically single files the product onto the process line.
- In-line. A Bi-Di conveyor is located in-line to accumulate product temporarily should a downstream operation stop for a short period of time.
- Pack-off. A Bi-Di conveyor is located at the end of a line to present the product to an operator for case packing or other manual pack-off operations.
- Others.

Optional Equipment

Drives

- ◆ 1/2 HP, 3/4 HP, 1 HP, 1 1/2 HP
- ◆ Voltage
 - ◆ 110 Volts, 1 phase
 - ◆ 230/460 Volts, 3 phase
 - ◆ 90 Volts DC
- ◆ Duty
 - ◆ TEFC
 - ◆ Wash down
 - ◆ Stainless Steel
 - ◆ Inverter Duty
 - ◆ Explosion proof

Electrical Controls

- ◆ Manual Start/Stop Pushbutton Switch
- ◆ Magnetic Starter
- ◆ IEC Starter
- ◆ Variable Frequency Drive
- ◆ DC Speed Controller

Supports

- ◆ Locking Swivel Casters

Guide Rail

- ◆ 2 rails per side
- ◆ Width spacers

Pacific Conveyor Systems

1535 E. Edinger Avenue Santa Ana, Ca 92705

Tel: 714-258-1810 Fax: 714-258-2021

e-mail: sales@pacificconveyor.net

www.pacificconveyor.net